

Turtle Creek Luxury Apartments

*Discover
Grand
Living . . .*





Turtle Creek Luxury Apartments

*Discover
Grand
Living . . .*



The GRAND LIFE Begins at ALL NEW **Turtle Creek**

GRAND LIVING

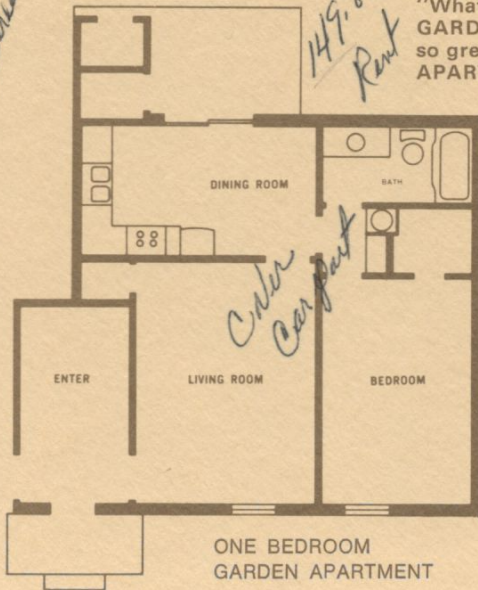
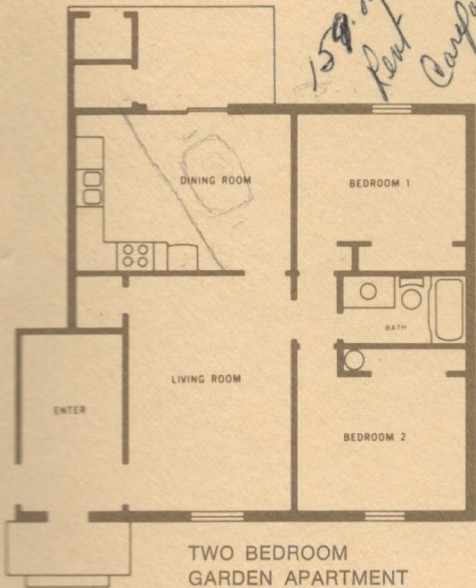
The beauty is obvious when you admire the antique brick exteriors . . . several different colors and textures . . . when you see the distinctive shake shingle mansard roofs . . . and the unique layout of the grounds.

Each apartment has been designed for total-electric comfort with all the conveniences this makes possible. Your kitchen is total-electric, of course, with a built-in dishwasher, a double door refrigerator-freezer, oven, range with overhead hood, and, under the double sink, a convenient disposal. And you'll fall in love with the antique-finish wood cabinetry.

The dining area is adjacent to the large living room and kitchen. Carpeting throughout the living/dining area, entry and hallways and in the bedrooms, coupled with double-sound-proofing between apartments, allows privacy seldom found in average apartments. Designed for contemporary living, all apartments have ample closet space, and additional locker storage space for those "out-of-season" things.

COMFORT

Your apartment features individually controlled electric heating and air-conditioning—comfort you control 365 days a year. Luxurious carefree living is extended from indoors to wonderful outdoor living. You can swim and sun, entertain guests by pool-side, or on your patio, or in the clubhouse. Turtle Creek Apartments have been designed with each resident in mind . . . what a wonderful place to call "home."



"What makes Turtle Creek
GARDEN APARTMENTS
so great? Aren't GARDEN
APARTMENTS all the same?"

The fact is apartments are not
all the same. The big difference
is the double sound proofing
to be found in all Turtle
Creek Luxury Apartments.

Here's what we mean:

We've found the biggest single
objection in some apartments is the
"feeling" that you had to whisper so that
you could not be heard next door or
downstairs, or maybe noises bothered you.
Now you can forget all that; we've done
something about that problem, years ago.

We've built the floors between upper and
lower apartments with a very special
Sarofoam—concrete, plus normal flooring
techniques, padding, and wall-to-wall
carpeting that goes into every luxury
apartment. We honestly believe it is not
luxury, unless it has been double sound
proofed. **Go ahead, sneeze!**

Turtle Creek



CLUB HOUSE

Overlooking the swimming pool is a distinctive club house. Complete with kitchen, recreation facilities, and a separate laundry. Turtle Creek Club is a fine place for meetings, holding parties, wedding receptions, etc. Yours to use by reservation.

